

# IBERIAN IMPRESSIONS

A Graphic Look  
on Spanish Identity

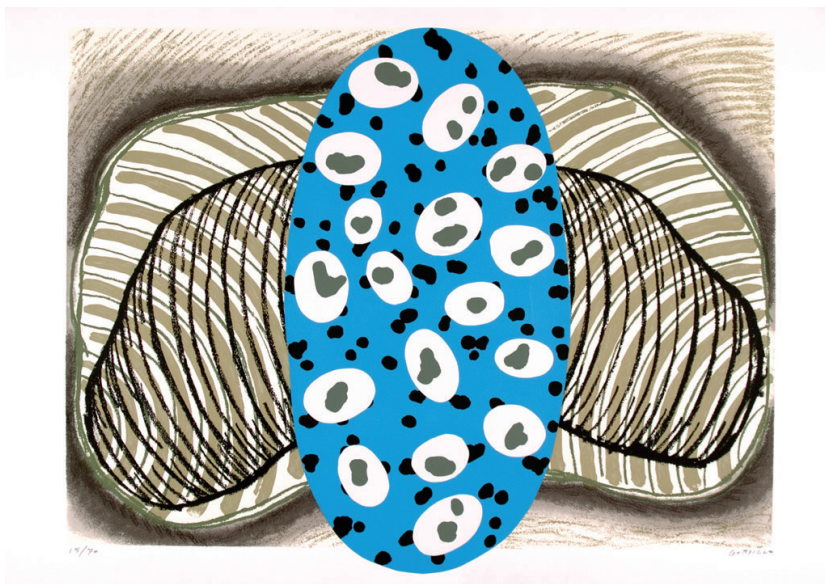
CPS at CCB  
12 to 30 oct 2023

*"I believe that the authentic artist expresses more than himself, I think that his process goes beyond his initial intentions and extends his roots in the unconscious and subconscious."*

Michel Seuphor - *Le Style et le Cri*

**Tàpies** (1923-2012) in the background, represented, evokes the revolution in his art, which took place in 1952, with the discovery of a new relationship between painting and reality. With the creation of a writing of plastic signs and symbols (crosses, triangles, letters), which evoke graffiti on walls, the wall is in fact a central image of his thought and painting, it challenges us to an effort of reading and deciphering its proposal, to which each person can give a personal and different meaning, always in relation to the human adventure.

In the work of **Alcántara** (b. 1960) a post-cubist grammar was enriched with the halo of an inaugural, surrealizing mystery, recognized by Portuguese poets such as Cruzeiro Seixas or Mário Cesariny. The poet-sculptor not only reconnects the lost link with the original sources of the



Luis Gordillo, Screen print with collage, 70 x 100 cm, 1996  
CPS edition of 70 numbered and signed prints

archetypes, he gives form in his three-dimensional sculptures to the contents of an ancestral imaginary clearly evident in the image of the dragon in the engravings he presents to us.

In turn, **Luis Gordillo** (b. 1934), considered one of the most original artists on the contemporary artistic scene, with a great connection to informalism, went through the experience of Pop Art in the 1960s. In line with the New Madrilénian Figuration (70s and 80s) which tends to blur the

boundaries between figuration and abstraction, he discovered through psychoanalysis the relationship between the world of thought, experience and aesthetic expression, valuing the playful component, ironic and unusual aspect of painting and the importance of series and repetition that he explores in his current works.

Artists also worth highlighting, such as **Rueda** (1926-1996), painter, sculptor and engraver, master in the art of stained glass and murals, one of the founders of the Museum of Spanish Abstract Art in Cuenca in 1969, **Juan Barreto** (b. 1943) whose work, which came to move towards poetic expressionism, offers us today images of a highly stylized urban architecture in lines, geometries and ascending rhythms, or **Julián Jule García** (b. 1936), one of the creators in Toledo of the Tolmo group, bring together other authors have very particular visions of contemporary perplexity, anguish, fury, sensuality and poetry. In a union that is that of every true work of art between conscious and unconscious, visible and invisible, reality and imaginary.

Maria João Fernandes

International Association of Art Critics